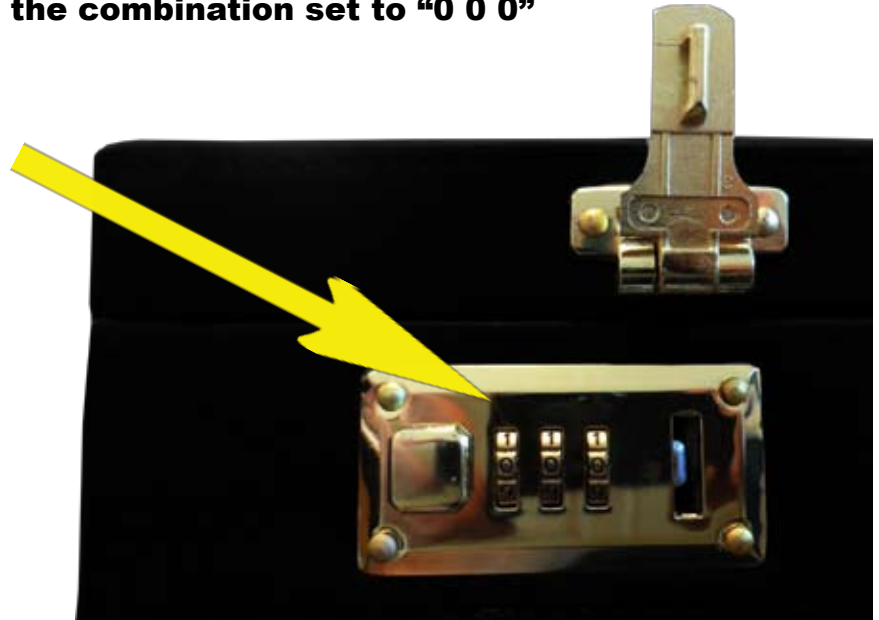


# Directions for Changing Combination on Apron Case.

All new cases are shipped with the combination set to "0 0 0"  
...the default combination.

As shown here:

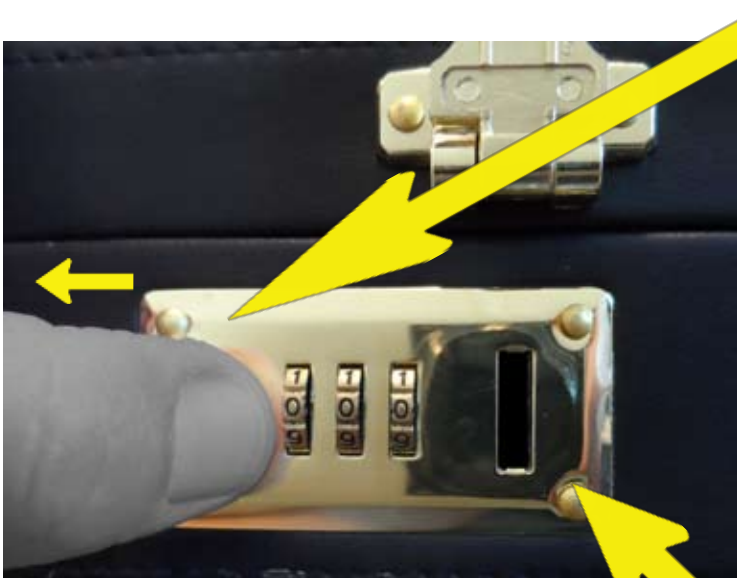


## Step 1

### Dial-In Existing Combination

Again, this will be "0 0 0", if you have not previously set your own personal combination.

If you can't slide the button, as shown here, STOP! This is not the existing combination and you can't change the combination.



**Note.** When the button is slid to the outside of the case, the latch window will be empty.

## Step 2

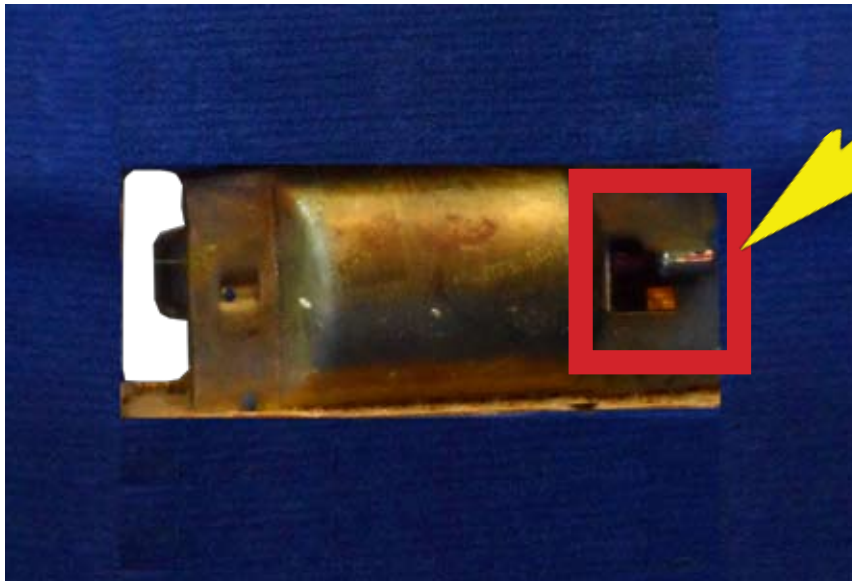
### Locate Combination Change Toggle Switch

On the inside of the case, directly behind the slide button, you will see a small criss-cross cut in the velvet lining. This cut has been made in the velvet lining to provide access to the combination change switch.

For illustration purposes, I cut a large piece of velvet away so you can see the entire mechanism inside.

The actual slit in the velvet is small. It is just big enough to provide access to the combination change switch.

On the photo below, the red box identifies the precise location of the combination change switch. It is located in the center of the red box.



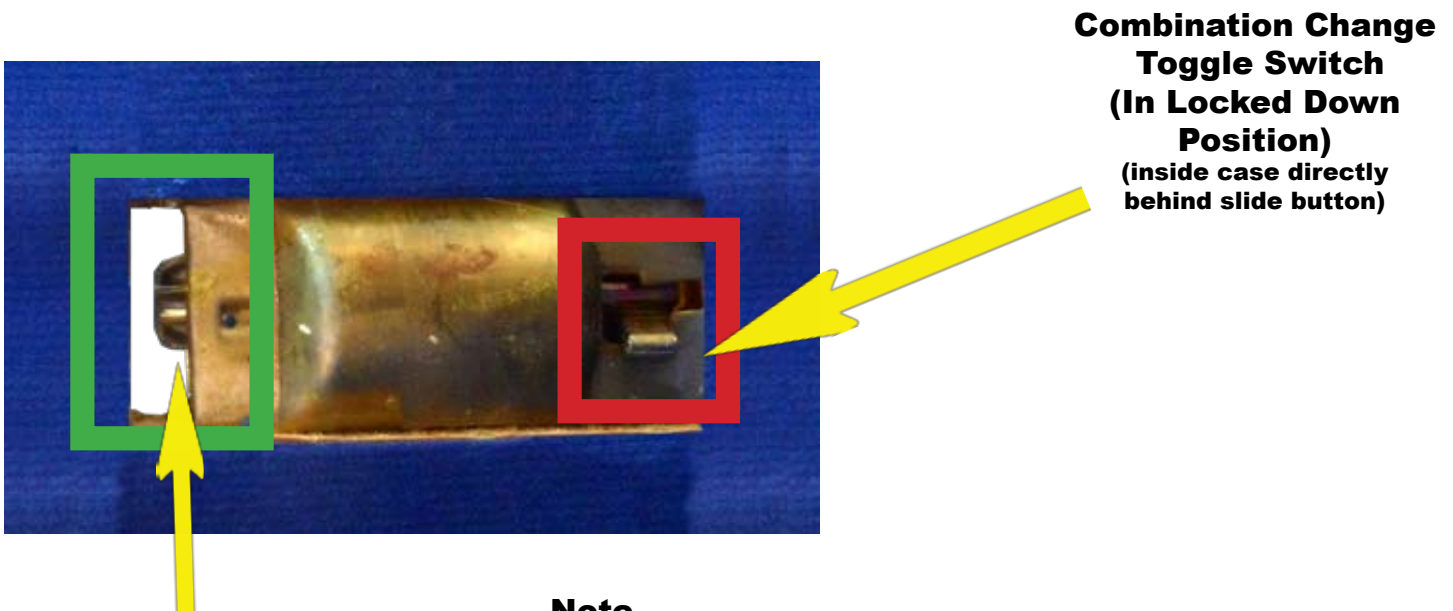
**Combination Change  
Toggle Switch  
(In standard  
operating position)  
(inside case directly  
behind slide button)**

### Step 3

#### Slide and Lock Down Combination Change Toggle Switch to Set Mode to Allow Combination Change

From the inside of the case, with the current combination set, slide the Combination Toggle Switch toward the inside of the case and push down so it locks in place in the down position, as shown below.

On the photo below, the red box identifies the precise location of the combination change switch. It is located in the center of the red box.



#### Note.

If the Switch is in the Locked Down Position, a Round Pin will be protruding out behind the locking latch. From outside the case, if you pull the Slide Button to the outside, as you would to open the lock, the pin should be visible through the latch window.



## **Step 4**

### **Set Your Personal Combination and Release the Combination Toggle Switch from its Locked Down Position**

**If you have correctly engaged the Combination Change Toggle Switch In Locked Down Position. You can proceed to reset each of the three the combination dials to your chosen combination.**

**When you are done, slide the Combination Change Toggle Switch back up and toward the outside of the case to its standard operating position Your New Combination should now be in place.**

**Each Combination lock works independently.**

**Follow the same steps to set the other lock set.**